

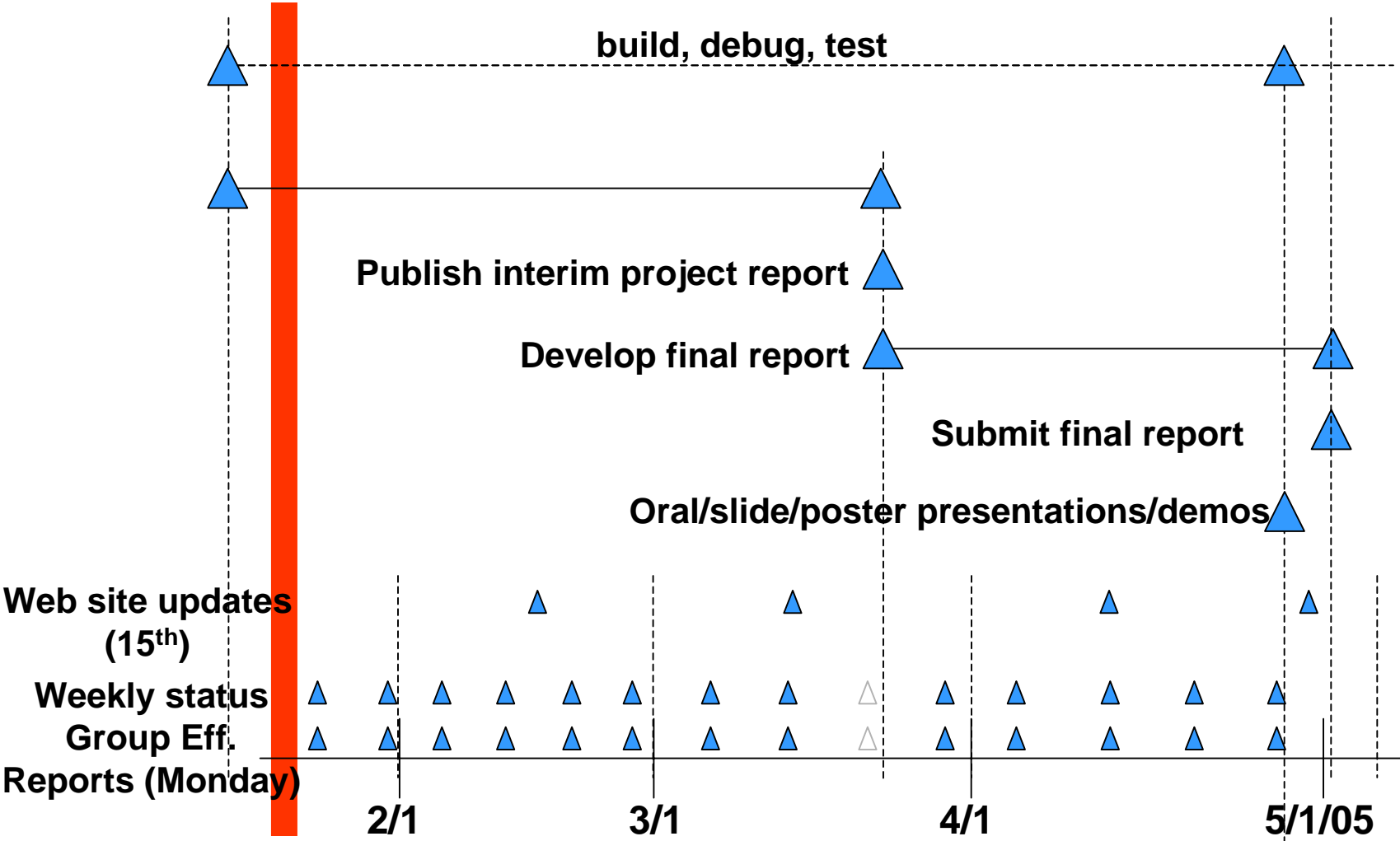
Senior Design - Spring 2005

EE/CpE 424

Outline

- Spring 2005 tasks
- Fall 2004 grades
- Upcoming priorities, class schedule

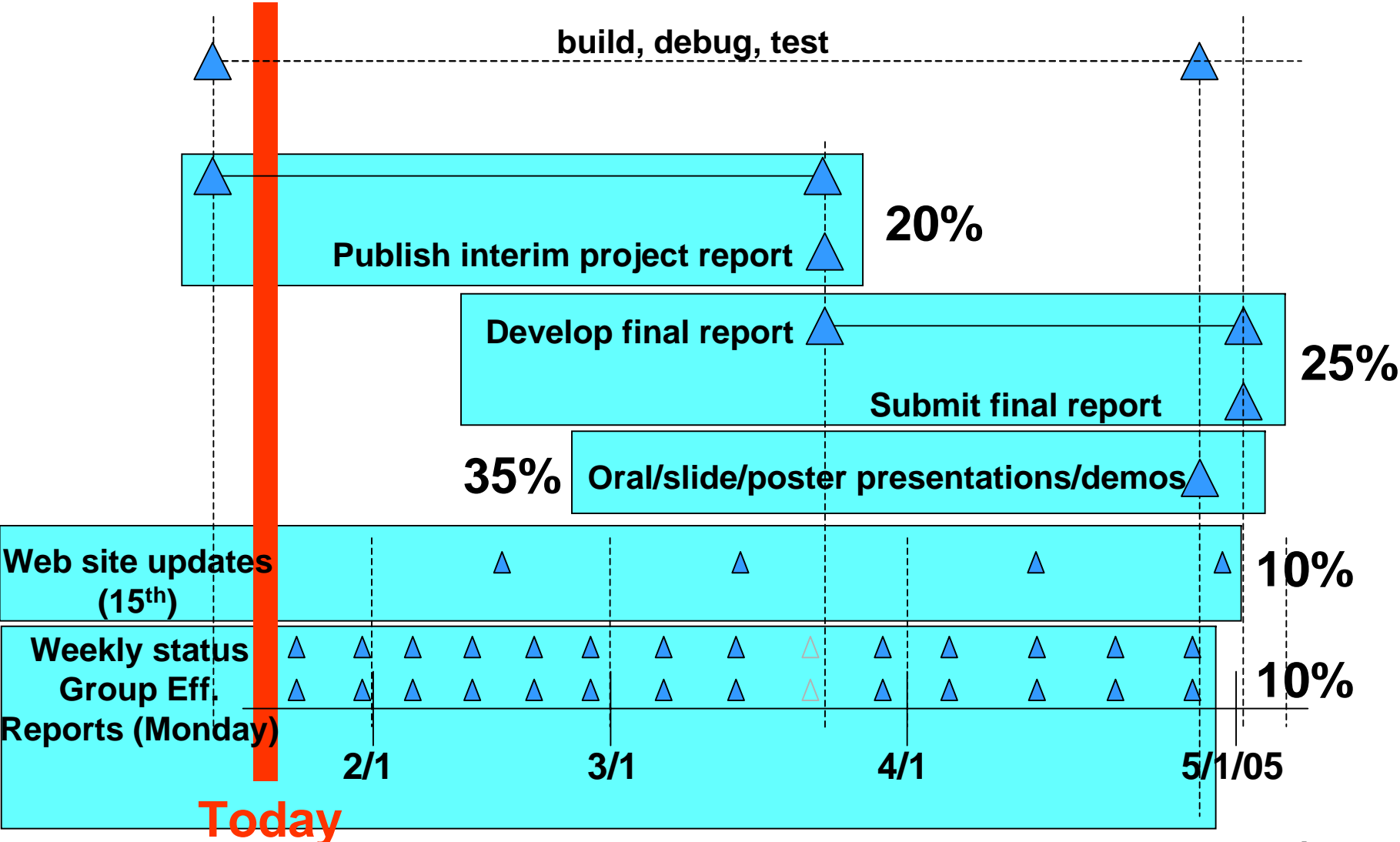
Senior Design Tasks – Spring '05



Today

Design Day: 4/27

Senior Design Tasks – Spring '05



Senior Design Grading Fall '04

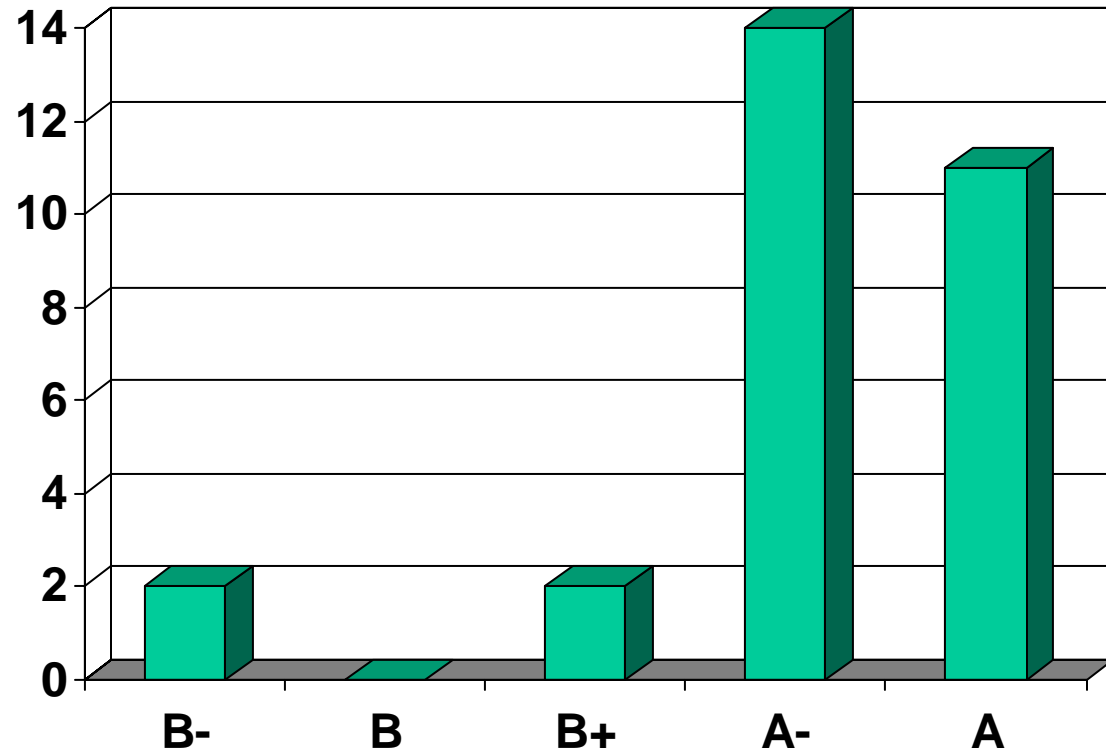
Each group's faculty advisor determined 80% of group's grade. Each advisor set criteria appropriate to the project and their policies. For groups I advised, this part of the grade was based on:

Use of appropriate engineering judgment	25%
Appropriate level of effort	25%
Establishing a realistic schedule and adhering to it	25%
Responsiveness to advisor feedback	25%

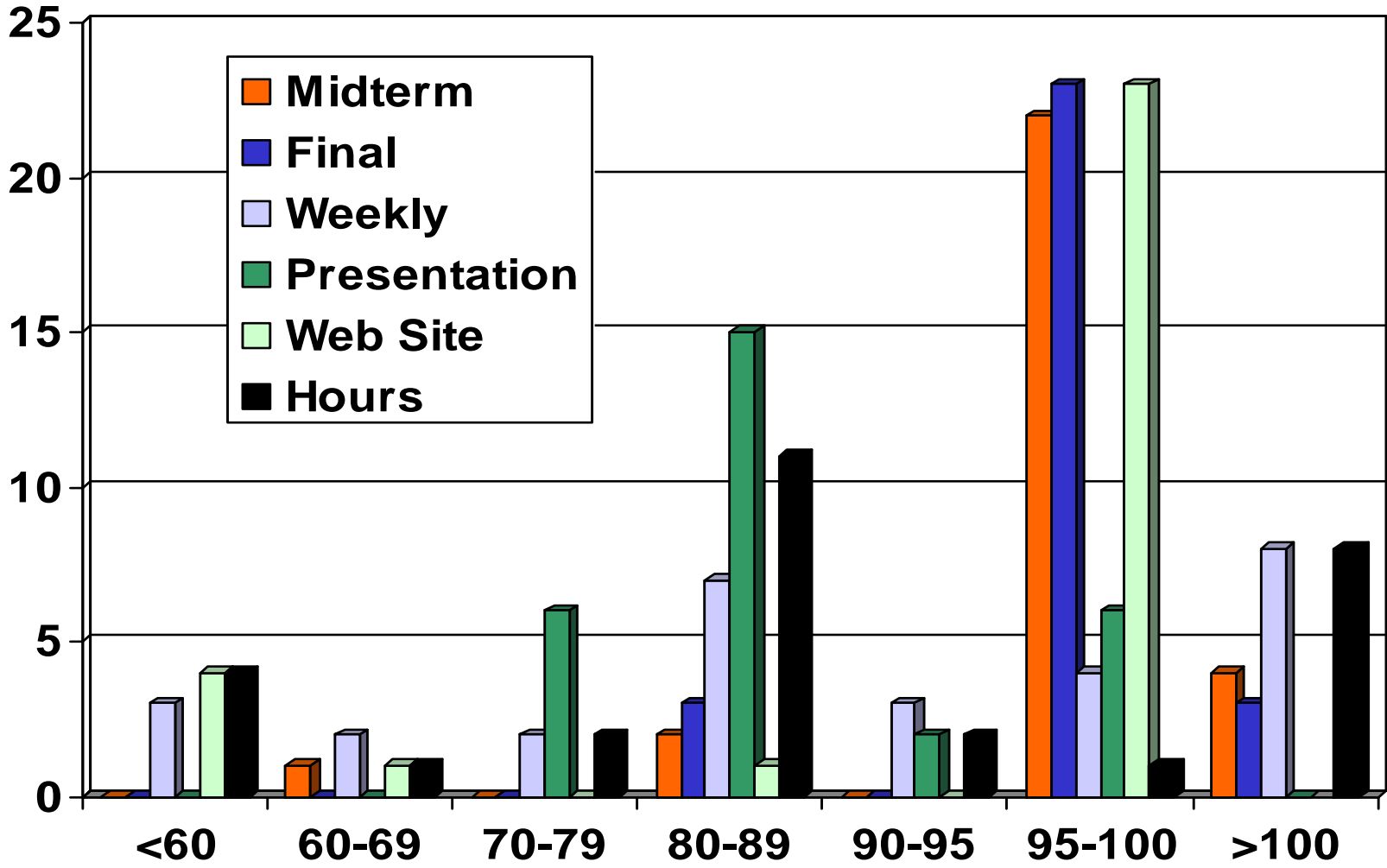
As course coordinator I determined 20% of grade, based on

Timeliness, completeness of deliverables	20%
Initial project proposal	20%
Presentation	10%
Web site	10%
Final project proposal/Component list	20%
Overall Effort	20%

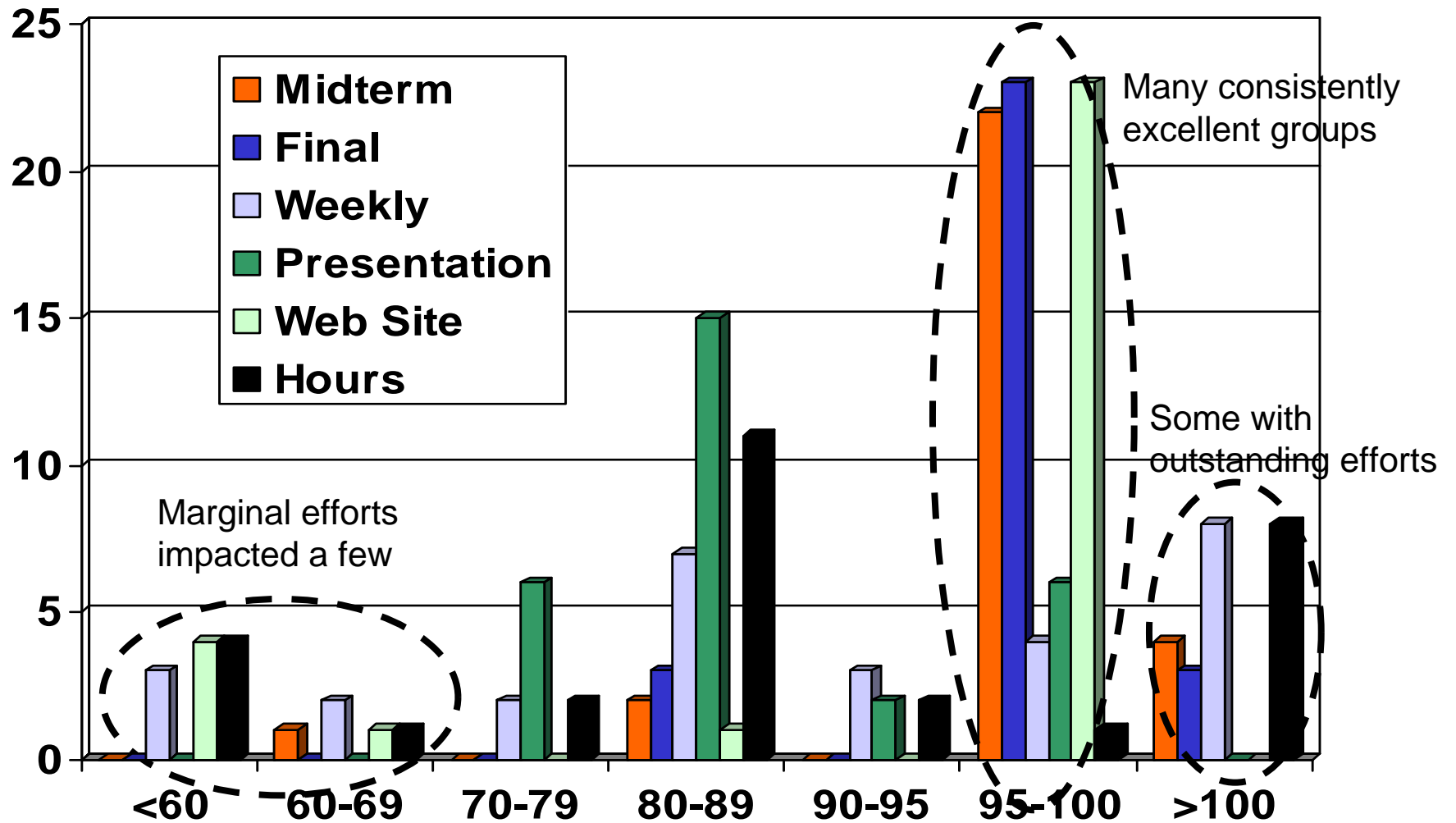
Senior Design Fall '04 Final Grades



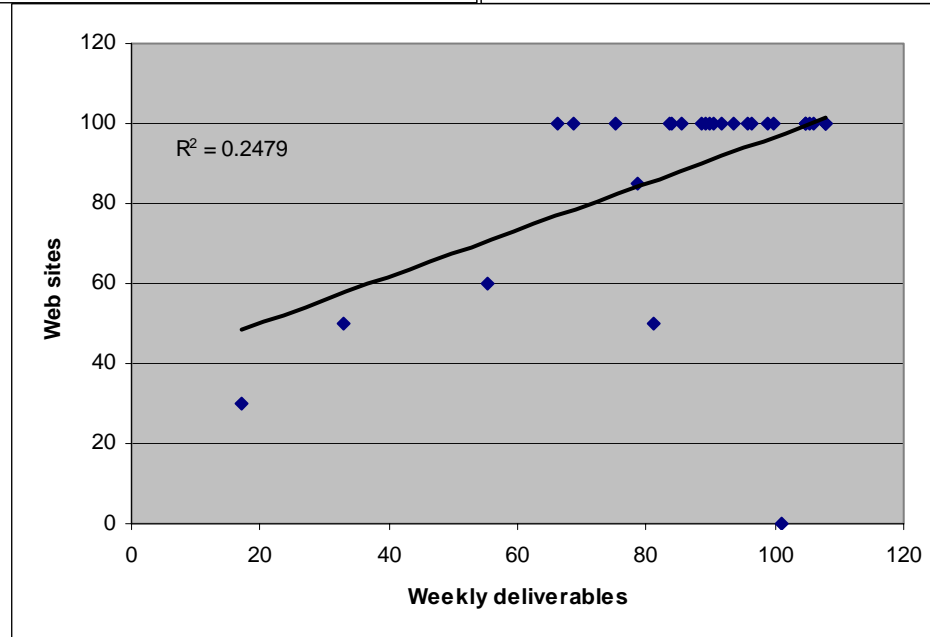
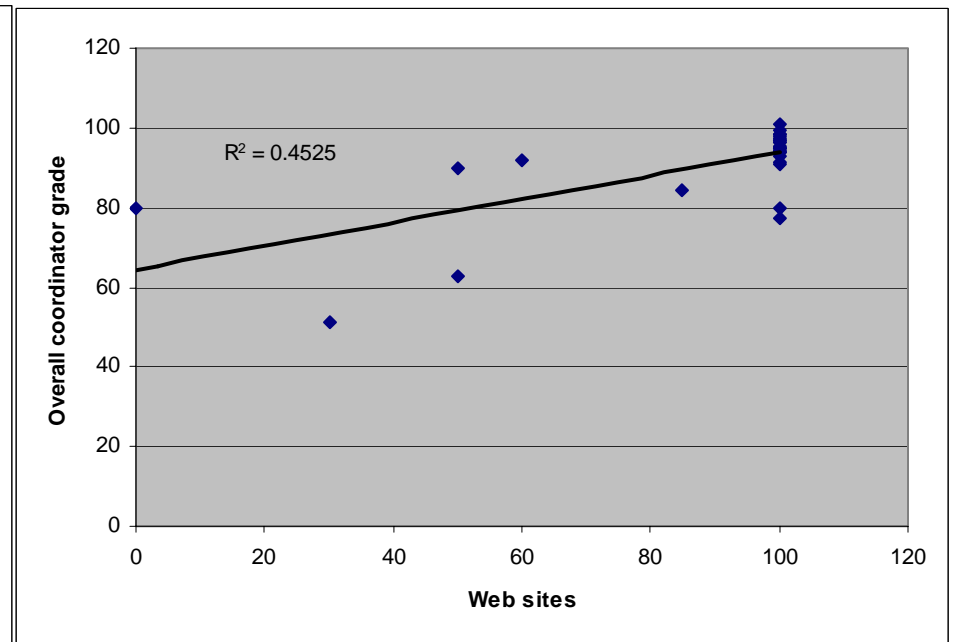
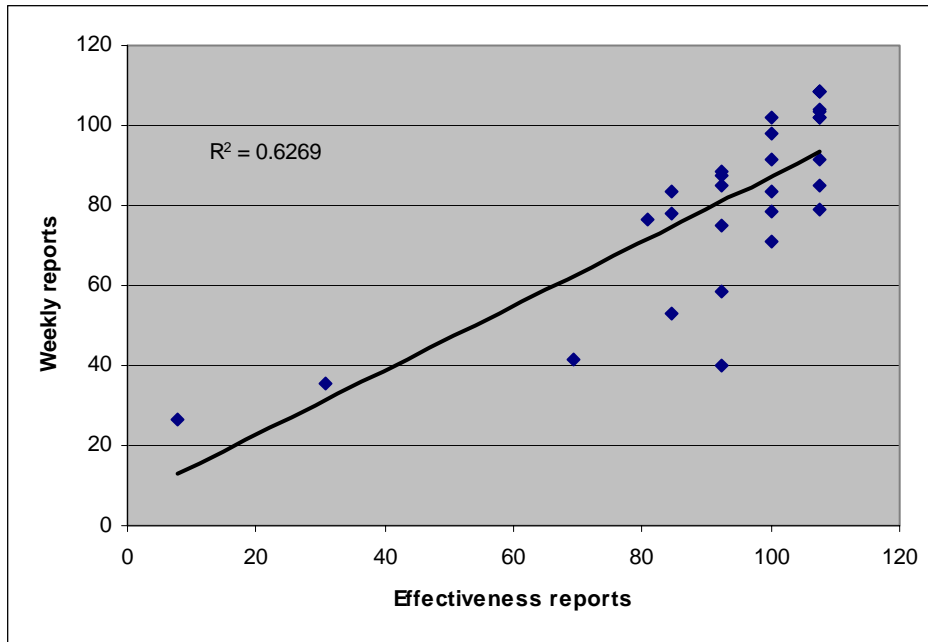
Components of Coordinator Grade



Components of Coordinator Grade



Grade Correlation



Deliverables Schedule

- Weekly reports are due **weekly** by Noon, Monday.
 - Both Group Weekly reports and individual group effectiveness reports.
 - To ensure proper credit, email separately, include group number and type of report in email subject
- Web sites will be graded the 15th of each month. All weekly reports, interim and final reports, presentations, and brochures must be posted on web site, hosted on panda.ece.stevens-tech.edu
- Interim project report due Tuesday after Spring Break (3/29/05)
- Design Day is April 27th.
 - Details will be provided later including Design Day brochure requirements
- Final Report due Tuesday, May 3rd

Other items

- Senior Design expense reimbursement:
 - At the end of the semester
 - For items required for Senior Design
 - \$250 per group
 - Items that are paid for by the ECE Department must be returned to the ECE Department
- Class schedule:
 - If we meet, it will be 4-5 on Tuesday
 - Classes will meet less frequently in Spring 05 than in Fall 04
 - You should be working with groups and advisor.
- Lab equipment and supplies
 - See me for specialty items and passive components
 - Coordinate PCB design, lab space access with Dominik Hepp and/or Jason Berenbach
 - See Stu Tewksbury to borrow test equipment

Shameless Plug

- If you find one of your electives cancelled due to lack of enrollment or if you just want to take an exciting, course, consider:

CpE450 – Architecture, Design and Implementation of Embedded Systems for Real-time Applications.

Monday and Wednesday 10 – 11:15

Free copies of Circuit Cellar each month to all enrolled students

- Other new courses:

CpE440A – Information Security (Prof. Subbalakshmi)

CpE441A – Introduction to Wireless Systems (Prof. Yao)

CpE494A – Networked Systems Design (Prof. Kintala)